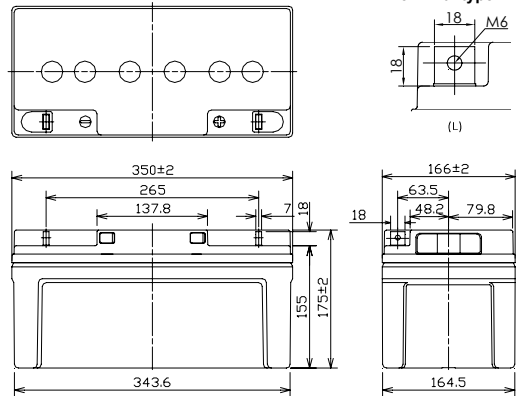




### ■Dimensions(mm)



※The printed trademark and color of the battery's picture maybe different from the object , please make the object as standard .

Battery case resin: Flame-retardant (UL94HB)

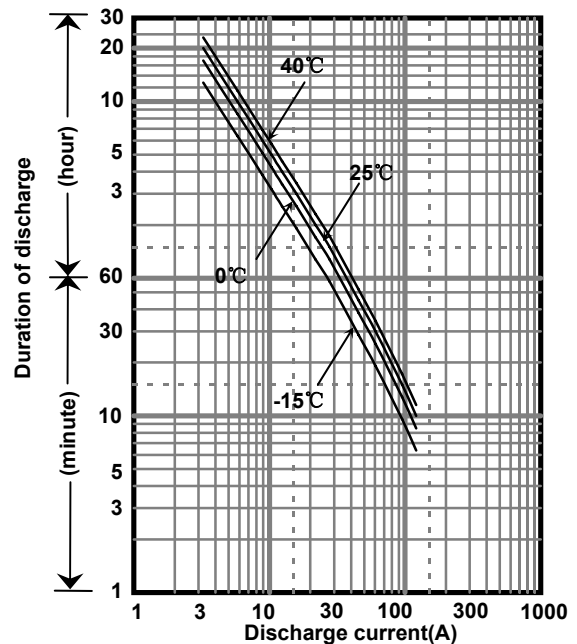
### ■Specification

Nominal Voltage		12V
Rated Capacity(20HR)		70Ah
Dimensions	Length	350 mm
	Width	166 mm
	Height	175 mm
	Total height	175 mm
Approx. Mass		23.0 kg
Terminal		M6 threaded post

### ■Characteristics

Capacity (25 °C)	20 hour rate	70Ah
	10 hour rate	65Ah
	3 hour rate	55Ah
	1 hour rate	45Ah
Internal Resistance (25 °C)	Fully charged battery	6 mΩ
Temperature Dependency of Capacity (20 hour rate)	40 °C	102%
	25 °C	100%
	0 °C	85%
	-15 °C	65%
Self Discharge (25 °C)	After 3 months	91%
	After 6 months	82%
	After 12 months	64%

### ■Duration of discharge vs. discharge current



### ■Watt Table(25°C) (Wattage/Battery)

Cut-off V	5min	10min	15min	20min	30min	45min	1h	1.5h	2h	3h	4h	5h	6h	10h	20h
9.6V	2312	1815	1391	1078	855	662	504.0	387.0	303.0	241.9	170.0	142.0	126.0	80.90	43.70
9.9V	2245	1779	1364	1073	846	651	491.0	379.0	295.0	237.2	166.0	138.0	122.0	78.10	43.40
10.2V	2179	1745	1337	1055	836	639	477.0	368.4	287.0	230.3	163.0	134.0	118.0	75.50	43.20
10.5V	2116	1710	1311	1002	817	621	464.0	361.1	283.0	217.0	159.0	130.0	115.0	75.20	40.50
10.8V	2054	1677	1285	956	774	609	458.0	350.6	276.0	210.7	155.0	128.0	113.0	73.70	39.80

### ■Ampere Table(25°C) (Ampere/Battery)

Cut-off V	5min	10min	15min	20min	30min	45min	1h	1.5h	2h	3h	4h	5h	6h	10h	20h
9.6V	251	175	130	105	79.2	59.6	47.3	36.5	27.4	20.3	15.0	12.6	10.5	6.65	3.56
9.9V	244	172	127	102	77.6	58.4	45.9	35.5	27.3	19.7	14.9	12.2	10.2	6.63	3.53
10.2V	239	167	125	101	76.1	56.7	44.5	34.6	27.2	19.1	14.8	11.9	10.1	6.62	3.52
10.5V	229	162	123	98	74.9	55.1	43.3	33.9	26.5	18.6	14.7	11.8	10.0	6.55	3.50
10.8V	203	159	119	95	72.3	54.2	42.0	33.0	25.2	18.2	14.5	11.5	9.80	6.50	3.49

All mentioned values are average values

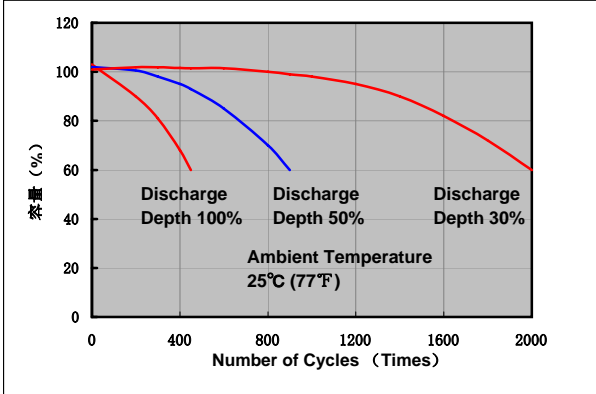
### Charging Method (25°C)

Cycle use	Control voltage:14.5-14.9V Initial current:28.0A or smaller
-----------	--

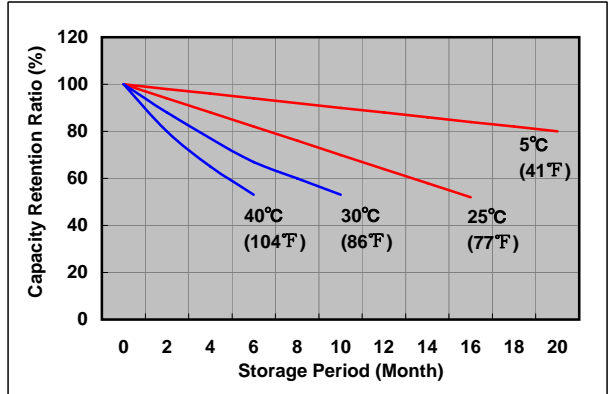
### Cut off voltage

Discharge current	3.5A-14.0A	14.0A-35A	35A-70.0A	70A-140A	140A-210A
Cut off voltage(V)	10.5	10.2	9.9	9.3	8.7

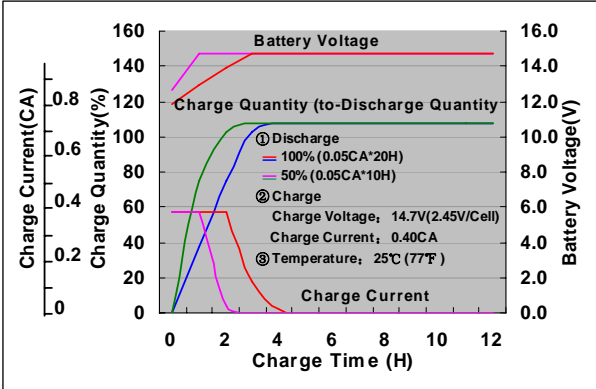
### Cycle life vs. Depth of discharge



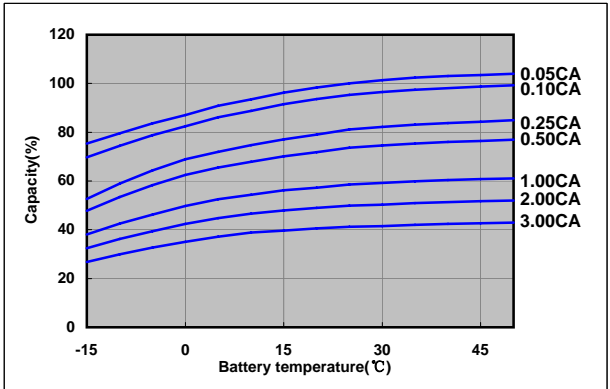
### Residual capacity test result



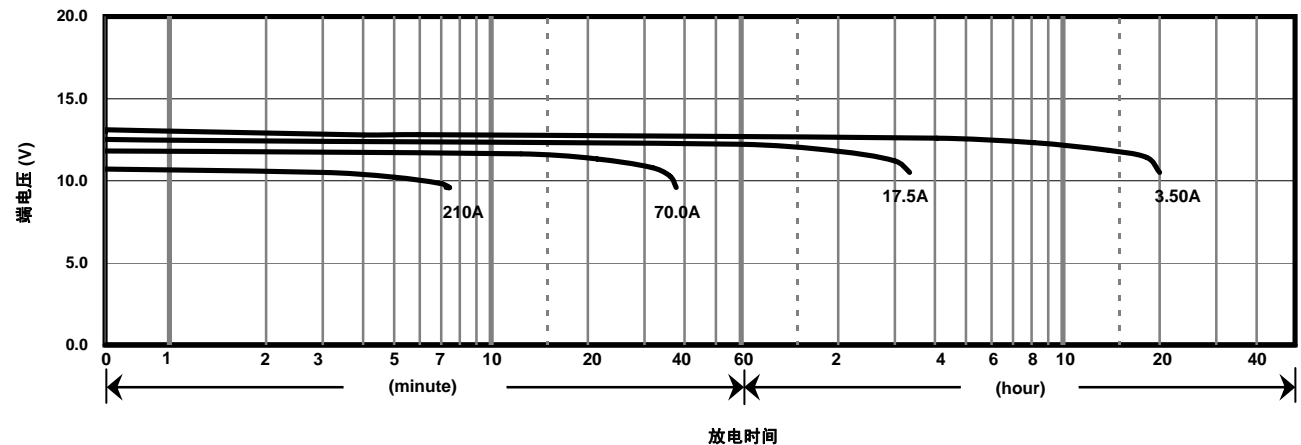
### Constant-voltage constant-current charge characteristics for Cycle use



### Discharge capacity by temperature and by discharge current



### Discharge characteristics(25°C)



### Caution

Due to the potential energy stored in the batteries, Please read 《Precautions for handling the Rechargeable Valve Regulated Lead Acid Batteries》 before using batteries. If improper handling or use of the batteries without understanding 《Precautions for handling the Rechargeable Valve Regulated Lead Acid Batteries》 may result in bodily injury caused by electrolyte leakage, heat generation, or explosion.

## Panasonic Storage Battery (Shenyang) Co., Ltd

NO. 17 Hunhe 20Th Street, Shenyang Economic & Technical Development Zone,110142 China

Tel: 86 24 25818921

Fax: 86 24 62786318

Website: <http://www.panasonicbattery.cn>

2015.01