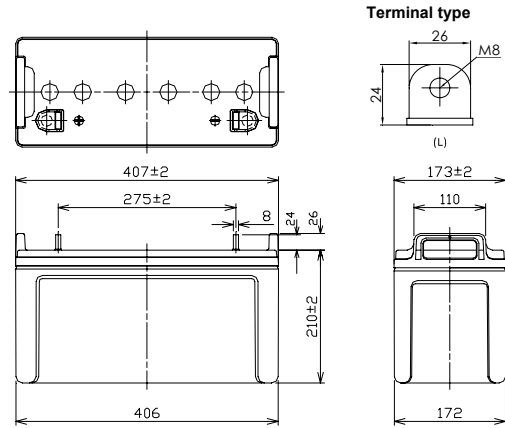




※The printed trademark and color of the battery's picture maybe different from the object, please make the object as standard.

■Dimensions(mm)



Battery case resin: standard(UL94HB)

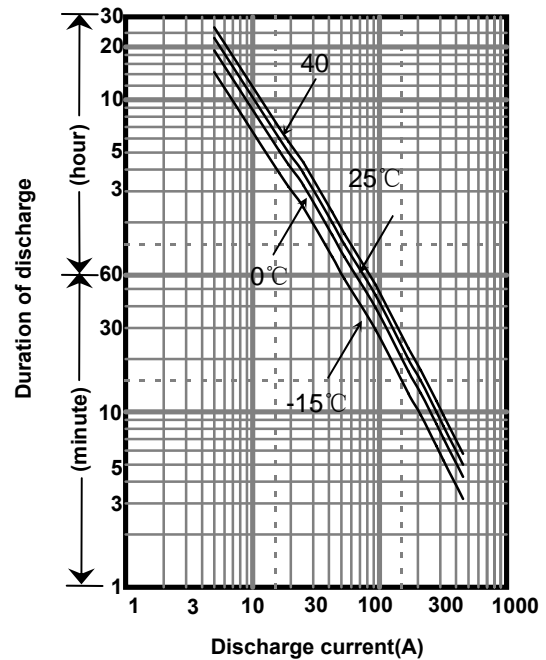
■Specification

Nominal Voltage		12V
Rated Capacity(20HR)		105Ah
Dimensions	Length	407 mm
	Width	173 mm
	Height	210 mm
	Total height	236 mm
Approx. Mass		34.0 kg
Terminal		L

■Characteristics

Capacity (25 °C)	20 hour rate	105Ah
	10 hour rate	100Ah
	3 hour rate	84Ah
	1 hour rate	70Ah
Internal Resistance (25 °C)	Fully charged battery	5 mΩ
Temperature Dependency of Capacity (20 hour rate)	40 °C	102%
	25 °C	100%
	0 °C	85%
	-15 °C	65%
Self Discharge (25 °C)	After 3 months	91%
	After 6 months	82%
	After 12 months	64%

■Duration of discharge vs. discharge current



■Watt Table(25°C) (Wattage/Battery)

Cut-off V	5min	10min	15min	20min	30min	45min	1h	1.5h	2h	3h	4h	5h	6h	10h	20h
9.6V	3400	2600	2300	1949	1439	1136	834.3	612.5	485.0	353.4	247.8	196.4	156.5	133.94	68.17
9.9V	3301	2524	2233	1892	1397	1103	810.0	594.7	470.9	343.4	240.6	191.6	151.9	130.03	66.19
10.2V	3205	2451	2168	1837	1356	1071	786.0	577.3	457.2	333.4	233.7	186.2	149.2	126.25	64.89
10.5V	3111	2379	2105	1784	1316	1040	763.5	566.0	443.8	324.0	226.8	180.6	146.3	122.57	64.26
10.8V	3021	2310	2044	1732	1278	1010	738.8	554.9	430.9	314.6	220.2	175.3	141.8	119.00	63.00

■Ampere Table(25°C) (Ampere/Battery)

Cut-off V	5min	10min	15min	20min	30min	45min	1h	1.5h	2h	3h	4h	5h	6h	10h	20h
9.6V	350	270	215	172	137	96	75.8	60.2	47.7	29.7	23.6	18.7	14.9	10.30	5.38
9.9V	340	262	209	167	133	94	73.6	58.4	46.4	29.1	22.9	18.2	14.4	10.15	5.28
10.2V	330	255	203	162	129	92	71.4	56.7	45.0	28.6	22.2	17.6	14.0	10.20	5.26
10.5V	320	247	197	157	125	90	70.0	55.1	43.7	28.0	21.6	17.1	13.6	10.10	5.26
10.8V	311	240	191	153	121	88	68.6	53.5	42.4	27.5	21.0	16.6	13.2	10.00	5.25

All mentioned values are average values

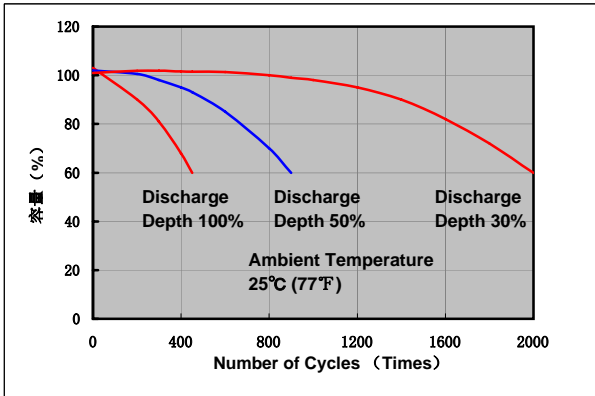
Charging Method (25°C)

Cycle use	Control voltage:14.5-14.9V Initial current:42.0A or smaller
-----------	--

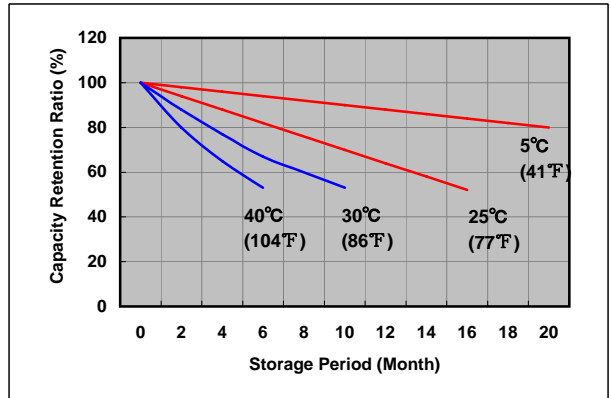
Cut off voltage

Discharge current	5.25A-21.0A	21.0A-52.50A	52.5A-105A	105A-210A	210A-315A
Cut off voltage(V)	10.5	10.2	9.9	9.3	8.7

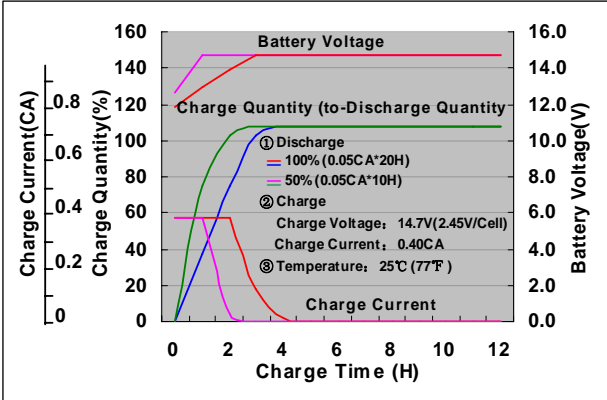
Cycle life vs. Depth of discharge



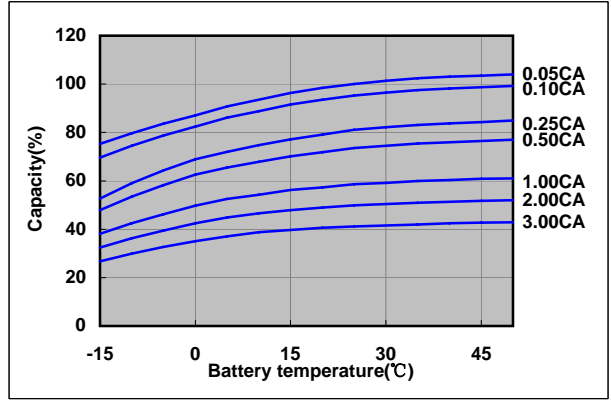
Residual capacity test result



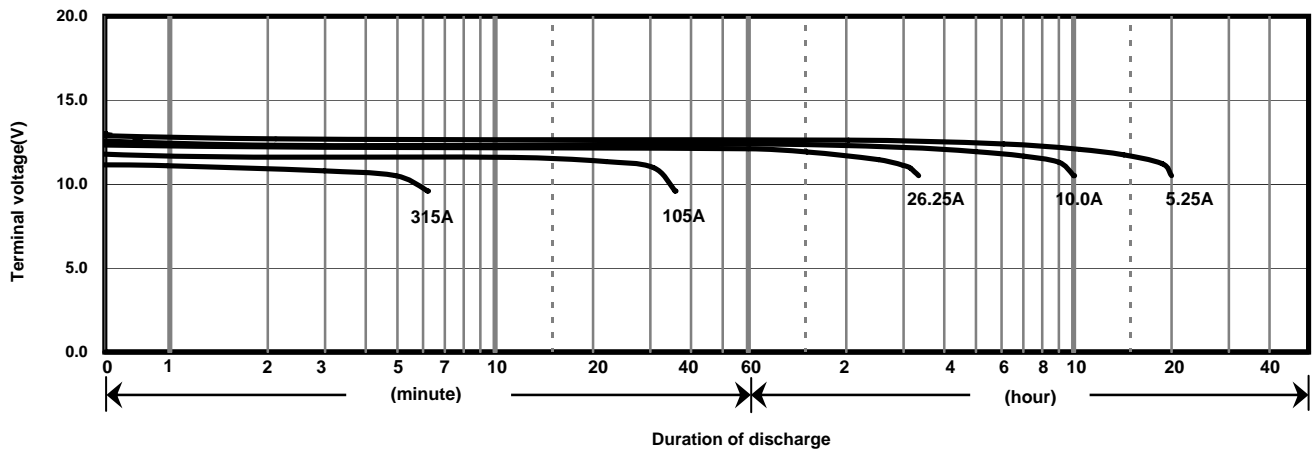
Constant-voltage constant-current charge characteristics for Cycle use



Discharge capacity by temperature and by discharge current



Discharge characteristics(25°C)



Caution

Due to the potential energy stored in the batteries, Please read 《Precautions for handling the Rechargeable Valve Regulated Lead Acid Batteries》 before using batteries. If improper handling or use of the batteries without understanding 《Precautions for handling the Rechargeable Valve Regulated Lead Acid Batteries》 may result in bodily injury caused by electrolyte leakage, heat generation, or explosion.

Panasonic Storage Battery (Shenyang) Co., Ltd

NO. 17 Hunhe 20Th Street, Shenyang Economic & Technical Development Zone,110142 China
Tel: 86 24 25818921
Fax: 86 24 62786318
Website: <http://www.panasonicbattery.cn>

2015.01